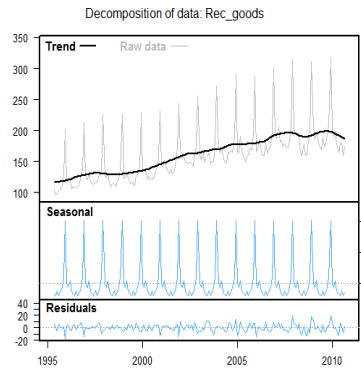
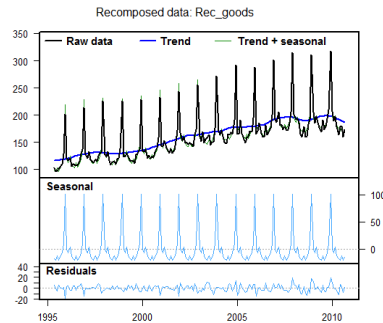


iNZight Time Series Quick Reference

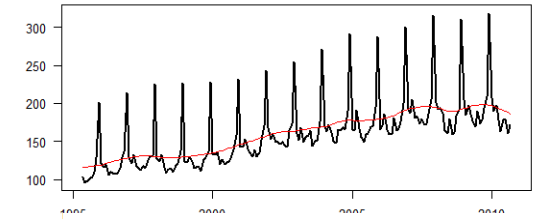
iNZight does not put any units on the graphs. These must be incorporated when writing the report



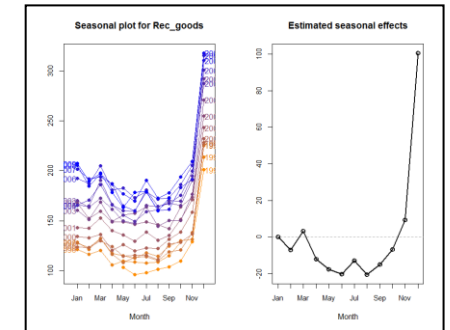
RECOMPOSE
to put series back
together



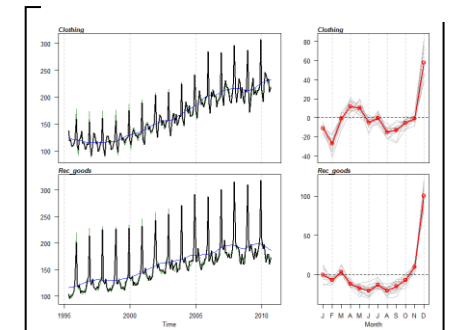
Time series plot for Rec_goods



Use Animate to "build" series

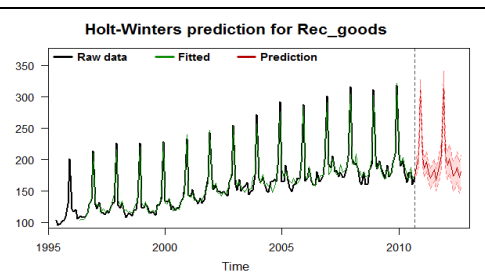


LHS shows each season
RHS shows average seasonal effect



Select two variables using
CTRL to compare series

	Fitted	lower	95% bound	upper	95% bound
Oct 2010	189.5134	174.7239	203.3030		
Nov 2010	203.9090	189.7060	218.1120		
Dec 2010	313.9441	299.3267	328.5614		
Jan 2011	202.9895	187.9509	218.0220		
Feb 2011	186.5449	171.0961	201.9937		
Mar 2011	196.7835	180.9473	212.6497		
Apr 2011	181.6849	165.4001	197.9697		
May 2011	169.9244	153.2197	186.6292		
Jun 2011	174.6790	157.8530	191.8051		
Jul 2011	183.7132	166.1644	201.2620		
Aug 2011	167.4043	149.4312	185.3773		
Sep 2011	176.7106	158.3118	195.1094		
Oct 2011	192.6941	171.6331	213.7552		
Nov 2011	208.0897	186.6443	229.8351		
Dec 2011	318.1248	296.2919	339.9577		
Jan 2012	207.1702	184.9466	218.8937		
Feb 2012	190.7256	168.1083	213.3428		
Mar 2012	200.9642	177.9501	223.9762		
Apr 2012	185.8656	162.4817	209.2795		
May 2012	174.1052	150.2865	197.9215		
Jun 2012	178.8597	154.6373	203.0822		
Jul 2012	187.8939	163.2628	212.5251		
Aug 2012	171.8850	146.5422	196.6277		
Sep 2012	180.8913	155.4341	206.3485		



Predictions given for 2 years into
future with prediction interval